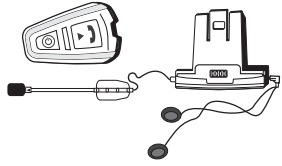




scala rider
Q-solo



DE -

<http://cardosystems.com/q-solo-download>
für eine Bedienungsanleitung und eine Kurzanleitung
in Deutsch

EN -

<http://cardosystems.com/q-solo-download>
for a manual and pocket guide in English

ES -

<http://cardosystems.com/q-solo-download>
para un manual y la guía de bolsillo en español

FR -

<http://cardosystems.com/q-solo-download>
pour un manuel et un guide de poche en français

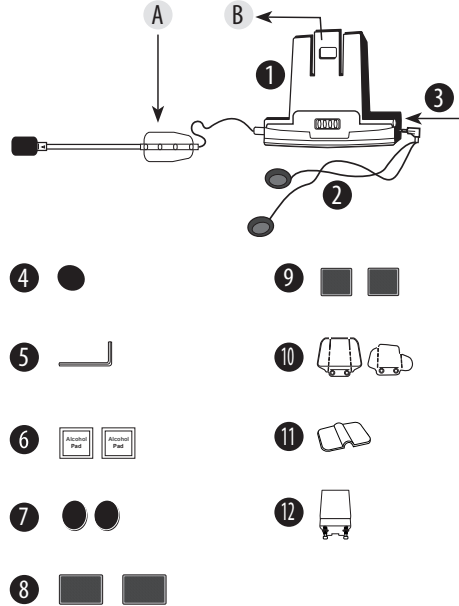
IT -

<http://cardosystems.com/q-solo-download>
per il manuale e la guida tascabile in italiano

Installation Guide

CONTENTS

- | | |
|---------------------------------|---------------------------|
| 1 Cradle | 6 Alcohol pads |
| A Hybrid microphone | 7 Speaker booster pads |
| B Release tab | 8 Rectangular velcro pads |
| 2 Speakers | 9 Square velcro pads |
| 3 Speaker jack | 10 Glue Plates (choose 1) |
| 4 Replacement microphone sponge | 11 Hybrid microphone clip |
| 5 Allen wrench | 12 Backplate |

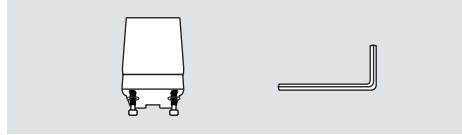


INSTALLING THE AUDIO KIT ON YOUR HELMET

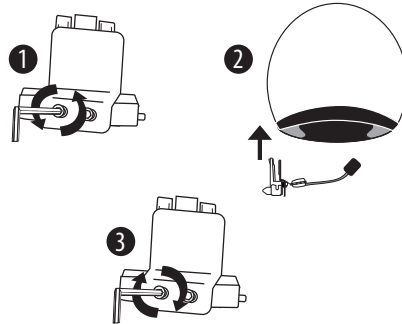
Attach the scala rider audio Kit to your helmet using the standard Backplate (Option A) or one of the Glue Plates (Option B).

OPTION A – USING THE BACKPLATE

PARTS REQUIRED (OPTION A):



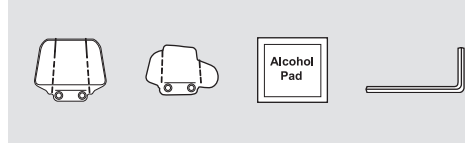
- 1 Loosen both screws
- 2 Push the Backplate between the helmet's outer shell and inner padding
- 3 Tighten the screws



* For details on attaching or removing the unit from the audio kit, refer to the back side of this installation guide.

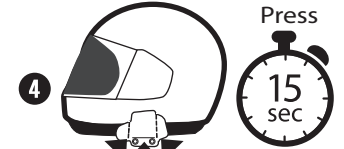
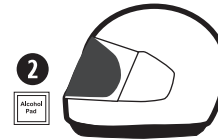
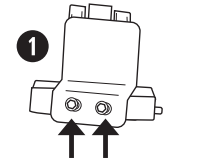
OPTION B – USING THE GLUE PLATE

PARTS REQUIRED (OPTION B):

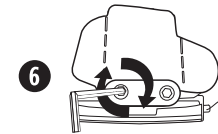


THIS CAN ONLY BE DONE ONCE!

- 1 Remove the Backplate by taking out both screws
- 2 Use the Alcohol pad to clean the exact spot on the helmet
- 3 • Choose which of the two Glue Plates is most suitable for your helmet
• Peel off protective backing sheet
- 4 Press the Glue Plate onto the helmet for 15 seconds as shown
- 5 Allow the glue to dry for 24 hours
- 6 Attach cradle to the Glue Plate and fasten both screws tightly



24 hours



DISCLAIMER

The Glue Plate is offered as a secondary option yet Cardo does not recommend using it, unless the Backplate cannot be installed on your helmet.

Cardo shall bear no responsibility whatsoever for damage of any kind caused as a result of gluing.



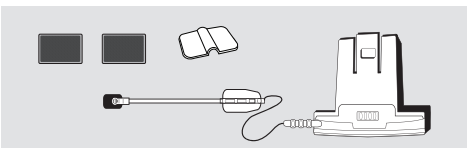
www.cardosystems.com

support@cardosystems.com

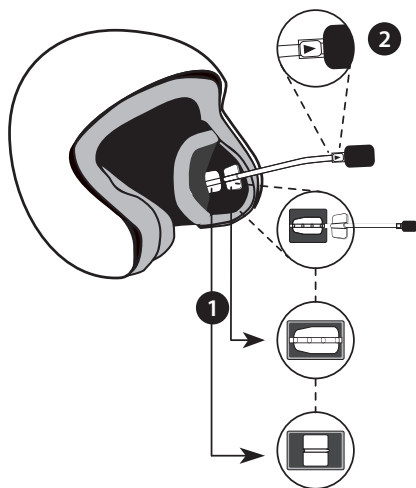
USA & Canada: 1-800-488-0363
International: +49 89 450 36819

POSITIONING THE HYBRID MICROPHONE

PARTS REQUIRED:

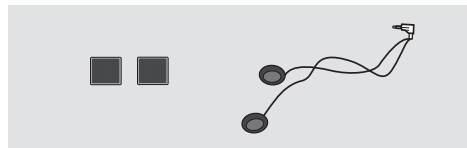


- Remove the left cheek pad to expose the inner shell
 - Clean the designated area
 - Peel off and stick the velcro pad and attach the hybrid Microphone in place.
 - For a more secure attachment use the second velcro pad and the supplied clip as shown.
- Ensure arrow is positioned towards your mouth.



PLACING THE SPEAKERS

PARTS REQUIRED:



For best clarity, place speakers directly opposite and close to the ears. Helmets with deep recesses may require padding to bring the speakers closer for ideal positioning. Optional speaker booster pads are provided for this purpose.

- Remove both cheek pads to expose the inner shell
 - Clean the designated area
 - Peel off and stick the velcro pads

** To use the optional speaker booster pads , place them between the Velcro pad and the speaker.
- Attach the speaker with the shorter wire onto the left velcro pad. Cross the long speaker wire over the center of the helmet to enhance FM radio reception. Attach the second speaker onto the right Velcro pad.
- Re-attach the cheek pads.

Using two speakers inside the helmet may be prohibited in certain jurisdictions. If this is the case, position both speakers on one side of the helmet.

ATTACHING AND REMOVING THE UNIT FROM THE AUDIO KIT

