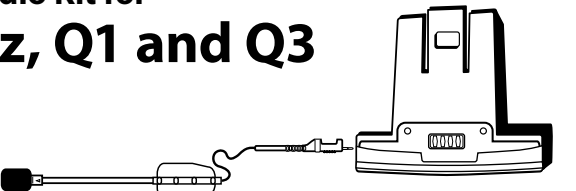




# scala rider®

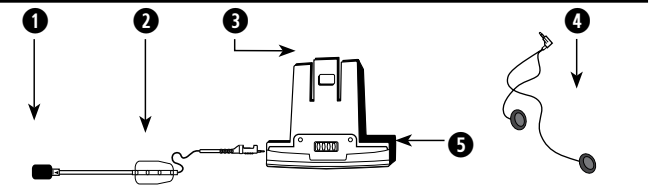
## Audio Kit for Qz, Q1 and Q3



### Installation Guide

English - Chinese

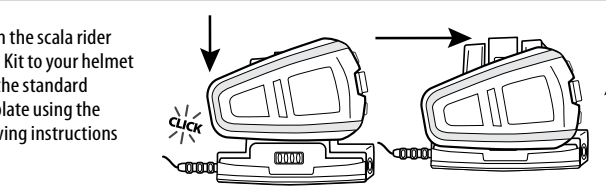
#### CONTENTS



6		7	
8		9	
10		11	
12		13	

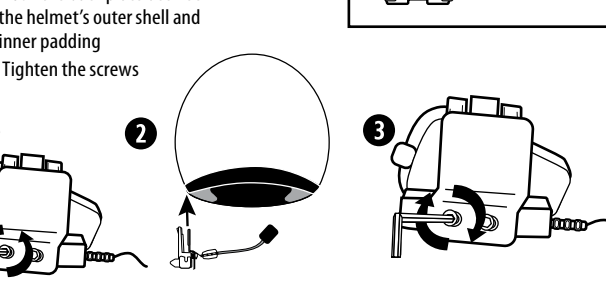
1 Noise canceling microphone	5 Speaker Jack6 Corded Microphone (*Only with Q1/Q3)	9 Alcohol pads
2 Hybrid mic	7 Replacement mic sponges	10 Speaker Booster pads
3 Release Tab	8 Allen wrench	11 Velcro pads
4 Speakers		12 Glue plates
		13 Hybrid mic clip

#### ATTACH THE SCALAR RIDER AUDIO KIT TO YOUR HELMET



#### OPTION A: USING THE BACK PLATE

- Loosen both screws
- Push the back plate between the helmet's outer shell and inner padding
- Tighten the screws

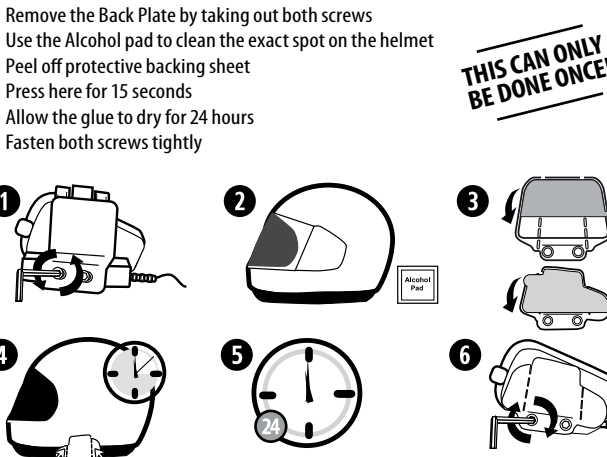


#### OPTION B: USING THE GLUE PLATE

Glue the Audio Kit onto your helmet when the standard Back Plate method cannot be used. Choose which of the 2 glue plates is most suitable for your helmet.

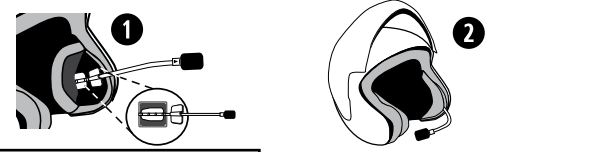
*While we have no reason to believe that the gluing option might negatively affect any helmet, Cardo does not assume any responsibility, irrespective of its nature and circumstances. The Glue Plate is offered as an option that you may use at your own risk and subject to renouncement of any future claims.*

- Remove the Back Plate by taking out both screws
- Use the Alcohol pad to clean the exact spot on the helmet
- Peel off protective backing sheet
- Press here for 15 seconds
- Allow the glue to dry for 24 hours
- Fasten both screws tightly



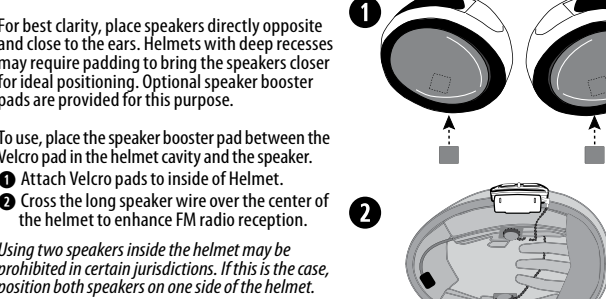
#### POSITIONING THE HYBRID MICROPHONE

- Open the lining between the helmet's inner padding. Use the Velcro pad to hold the Hybrid Microphone in place. Attach the Microphone to the Velcro pad.
- Adjust the location so that the microphone is located opposite the center of your mouth.



#### PLACING THE SPEAKERS

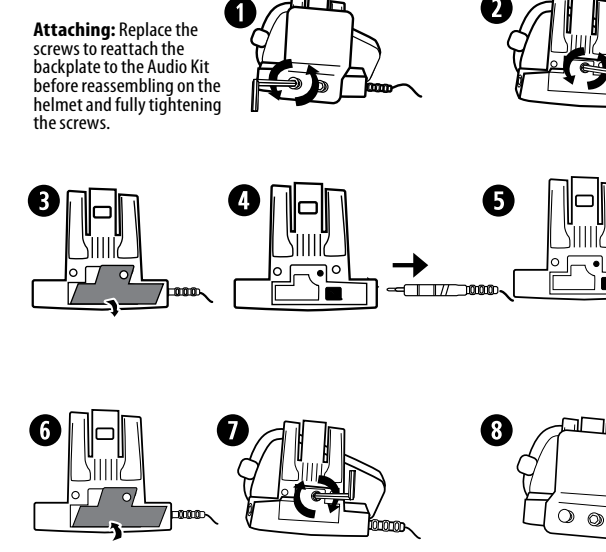
For best clarity, place speakers directly opposite and close to the ears. Helmets with deep recesses may require padding to bring the speakers closer for ideal positioning. Optional speaker booster pads are provided for this purpose.



#### CHANGING THE MICROPHONE TYPE

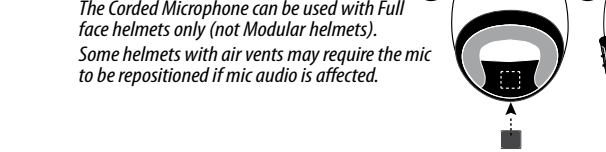
**Removing:** Before changing the microphone, completely remove the Audio Kit and backplate from the helmet.

**Attaching:** Replace the screws to reattach the backplate to the Audio Kit before reassembling on the helmet and fully tightening the screws.



#### POSITIONING THE CORDED MICROPHONE

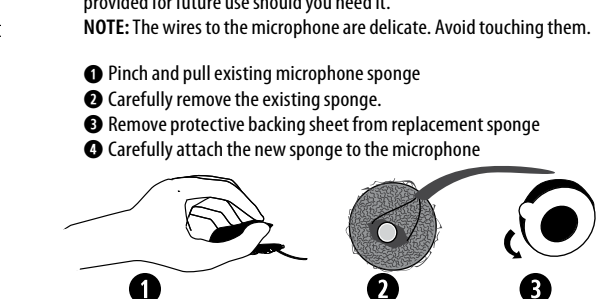
Attach Velcro to inside front of helmet. The Corded Microphone can be used with Full face helmets only (not Modular helmets). Some helmets with air vents may require the mic to be repositioned if mic audio is affected.



#### REPLACING THE CORDED MICROPHONE SPONGE

A replacement corded microphone sponge is provided for future use should you need it.

**NOTE:** The wires to the microphone are delicate. Avoid touching them.



communication in motion®

www.cardosystems.com

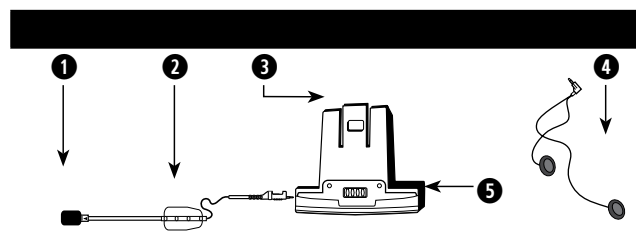
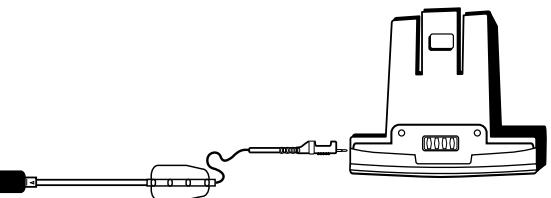
support@cardosystems.com

USA & Canada: 1-800-488-0363

International: +49 89 450 36819

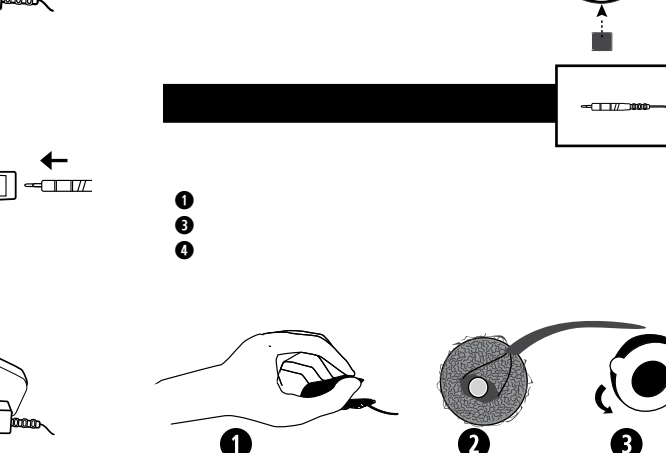
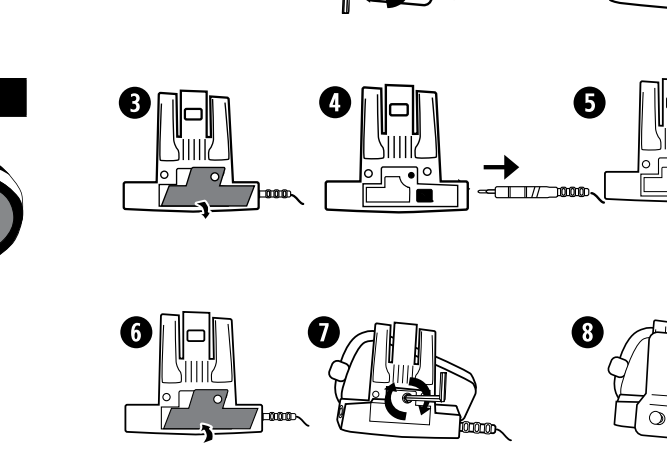
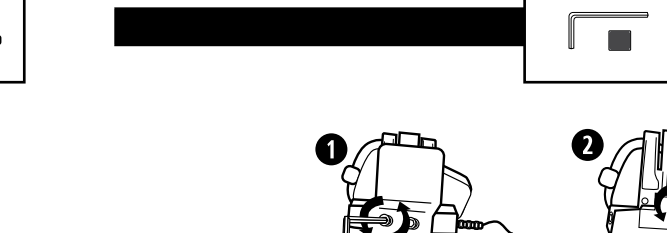
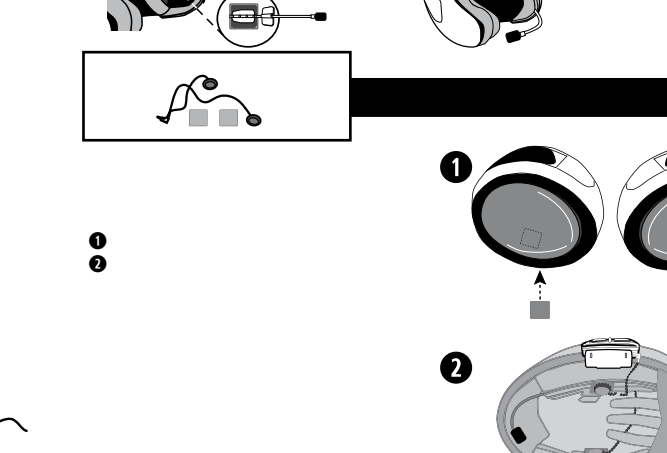
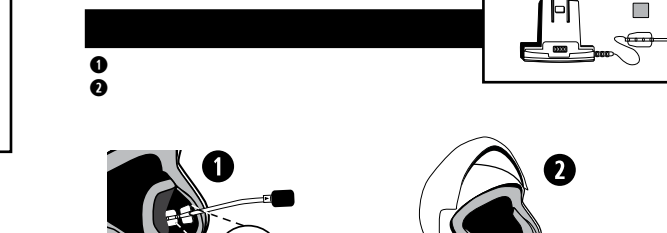
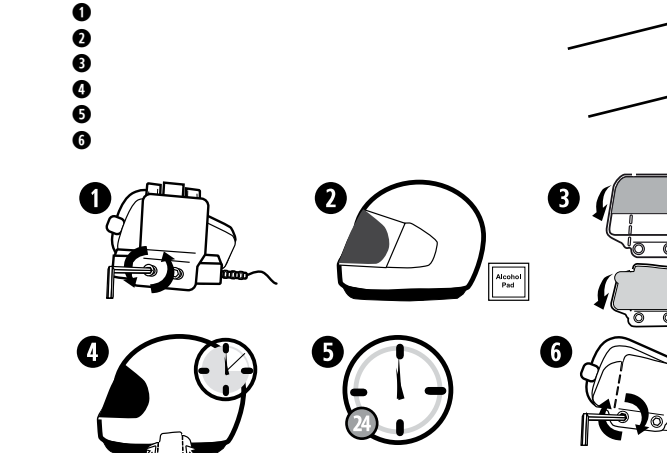
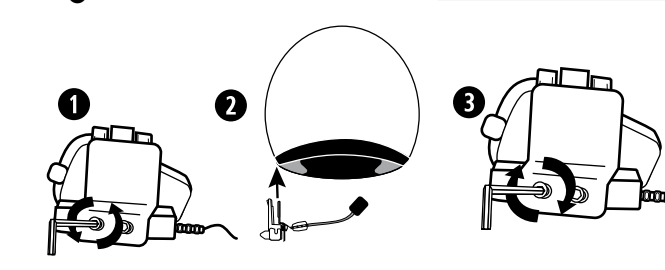
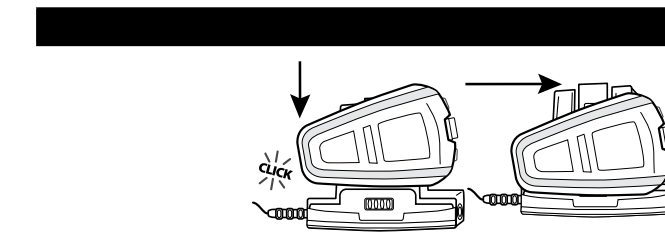


scala rider®



6	7
8	9
10	11
12	13

1	5	9
2	7	10
3	8	11
4		12
		13



www.cardosystems.com

support@cardosystems.com

USA & Canada: 1-800-488-0363

International: +49 89 450 36819